

## AWARDS SELECTION GATEWAY SADDLE CLUB "2024"

Congratulations to all participants, please select your awards from the following list. Whenever possible, the awards will be monogrammed or engraved with Gateway Saddle Club or GSC 2024. You can select awards from a lower place. However, you cannot put your awards together & receive a higher place award. You may select one award from the place you have won, or you may select one award from the next lower place plus one 6<sup>th</sup> place award. **Also, please fill out your 2<sup>nd</sup> choice award in case your first choice IS NOT available.** Trophies are available in all places. LEAD LINE RIDERS will each receive a belt buckle. **EXAMPLE:** (1<sup>st</sup> place or one 2<sup>nd</sup> place & one 6<sup>th</sup> place) or (one 4<sup>th</sup> place & one 5<sup>th</sup> place), or one (3<sup>rd</sup> place & one 5<sup>th</sup> or 6<sup>th</sup> place). If you have questions, please call Rosie Noble at 636-668-8844. ALL SELECTIONS are due BY Sunday, November 03, so I can make order deadline dates. Return forms by mail to Rosie Noble, PO Box 132, Foley, MO 63347 or email [ainoble@centurytel.net](mailto:ainoble@centurytel.net) or [bnbarrelracin@gmail.com](mailto:bnbarrelracin@gmail.com). Please send as PDF file.

Color Selections below for *4P*

Color selections for *3P*



*5G & 3V*

*1K*

Halter Sizes For *3D 3P*  
 200-300 lbs. – Pony  
 300-500 lbs. – Yearling  
 500-800 lbs. – Small  
 800-1000 lbs. – Average  
 1000-1600 lbs. – Large

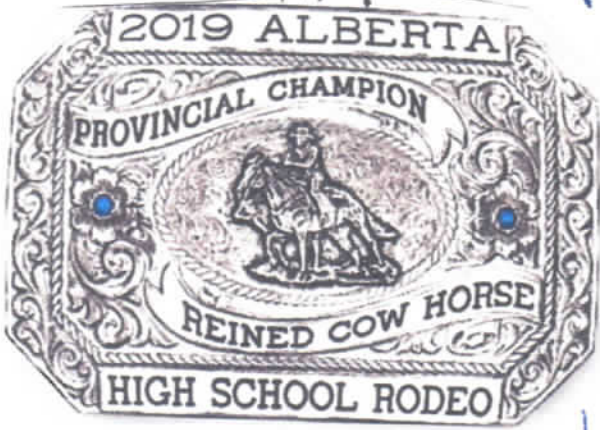
*HELMETS*

The Color Palette Below Shows Stock Backgrounds



SIZE	INCHES	CM	HAT SIZE
<b>S</b>	20 3/8" - 21 5/8"	52-55	6 1/2 - 6 7/8
<b>M</b>	22" - 23 1/8"	56-59	7 - 7 3/8
<b>L</b>	23 1/8" - 24 3/8"	59-62	7 3/8 - 7 3/4

FIRST PLACE  
SAMPLE 1A



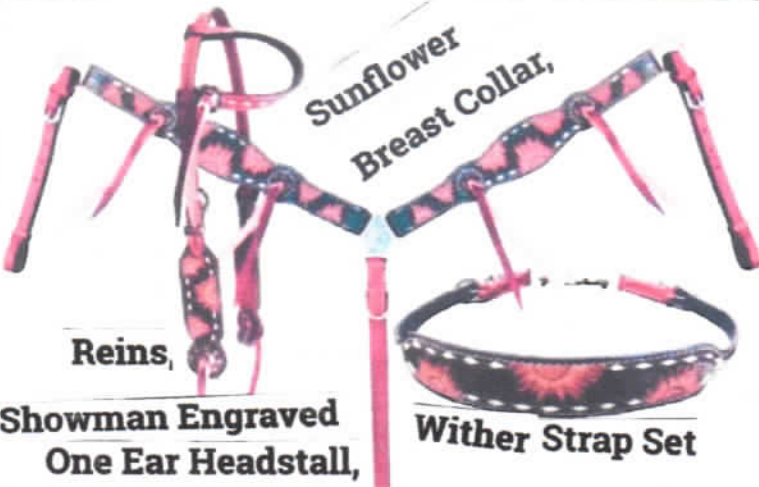
Gateway Saddle Club '2024'  
Class NAME  
Placing  
Rider & Horse Name



PENDANT  
P99E-BR/PL | \$174\* RETAIL  
Silver & gold electroplated with  
figure space & banners.

1C

1D



Reins,  
Showman Engraved  
One Ear Headstall,

Wither Strap Set



Tough1 Hand  
Painted Paisley  
Contoured Felt  
Saddle Pad  
JT International



Show Halter

1E

Bright cut silver trim completely covers the cheek and nose for an extra flash.  
Available in Horse only. Matching lead included.

Blue Horse 100%  
Pressed Wool Contoured  
Pad, 1/2" x 32" x 31", Cream  
An ultra premium pad that will  
not break the bank! This 100%  
wool pressed saddle pad provides  
unparalleled comfort & relief. No  
other synthetic or blend pads can  
relieve pressure points like this  
pad. Designed with a contoured  
spine, wither cut-out, leg cut outs  
(for a closer contact feel) & premi-  
um top grain wear leathers.



1F



Comfy Winter Blanket  
Tough outer shell. Suitable for turnout when temps start to fall. Twin  
chest buckles, T-hook surcingles, removable and adjustable leg straps,  
and wide set tail flap. 69"-87".

1G

Stetson Billy Straw Hat



1H

- 4 3/8" Pre- Creased Cattleman's crown
- 4 1/4" Pre- Creased Cattleman's brim
- Leather hatband with silver accents
- Comfort sweatband
- All over crown vent
- Sizes S, M, L, XL



**NEW COLORS**



S, M, L, XL. (S and XL are available in black only.)  
#30243, Solid Pair

**Legacy2**  
Working with the horse's own natural support structures, the Legacy2 cradles the fetlock and provides suspensory support without inhibiting movement. M, L.  
#44539, Front Pair



**NEW COLOR**



**NEW COLOR**

15

**Bronc Halters**



#423 -

1K



#4NE4 -

1L



#4NE7 -



#SCAC Aluminum Stirrups w/Crystals



#4BC6 -

1M

**Custom 3-Season Fleece Lined Jacket**

Wind and water resistant nylon shell. Polyester fleece lining. Zippered pockets. Black, Blue, Burgundy, Hunter, Navy or Red. Sizes: SM - 3XL.

#9400G Left Chest embroidery

#9400GFB Full back embroidery



1N



Leather Headstall w/Crystals  
#425C Slide Ear -  
#425CB Browband

10

1P



BeneFab Therapeutic Western Saddle Pad, One Size, Black BeneFab

SECOND PLACE 2A  
Sample



GSC RESERVE CHAMPION 2024  
Rider's Horse Name



2B

The perfect show collection, with its extremely durable material and beautiful faux leather details. 600 D Polyester.

A. Western Saddle Case  
#40220



2C

Tough1 Triple Arrow  
Contour Felt Saddle Pad,  
31" x 32"



2E

Tough1 Sunflower  
Contoured Felt Saddle  
Pad, 31" x 32"

2F

**Mounting Block\***

Storage compartment  
in the back. High  
density polyethylene.  
Black, blue or  
hunter green.



**2 Step**  
26" L x 15" W x 19" H  
#31817



2D

**Pro Lined Satin  
Stable Jacket**

Includes: Full Back Logo with  
lettering. Made of Duraweave fabric. Smooth oxford nylon surface and  
medium weight to provide a durable weather barrier. Wind and water resistant.  
Quilted nylon lining. Snap front. Rib trim collar, cuffs and bottom hem. Inside  
pocket. S - 5XL. Black, Blue, Burgundy, Hunter Green, Navy, Red.

Bridle Bag 2H



2G  
HORSE  
SIZE  
Newberry Show Halter



2I

**H. Double-Diamond  
Zip-Front Hoodie**

Our cozy fleece layer in a  
Southwest-inspired print  
has a drawstring hood and  
front kangaroo pockets.  
Full zipper. Banded cuffs  
and hem. 28" long in size  
medium. 100% poly. Machine  
washable. Imported.  
Sizes: S-XL, 1X-3X.

2K

**Padded Chap Bag**  
E. #15751



NAVY  
BLACK  
RED  
GREEN

**F. Denim Vest with  
Removable Hood**

The removable jersey-knit  
hood lends this denim  
vest a cozy layered look.  
Colorful stitching along  
the Western yokes and  
armholes. Metal buttons on  
placket, flap cargo pockets  
and waist tabs. Point collar  
and Western back yoke.  
28" long in size medium.  
100% cotton. Machine  
washable. Imported.  
Sizes: S-XL, 1X-3X.



2J

2

Horze 1200 Denier Turnout Sheet

2L



84" - 81" - 78" - 75" - 72" - 69" - 66"  
Blue - Orange - DARK NAVY

2M

Horze Nevada 1200 Denier Turnout Rain Sheet. A great turnout sheet for rainy weather with plenty of style. The solid construction of this durable, waterproof and breathable rain sheet will stand up to wet weather and keep your horse dry and comfortable. Seamless back to prevent leaking.

**Classic Fit** - Suspensory sling is positioned to ensure lower limb support. Ergonomic design provides a sleek, modern fit with bound edges to keep out dirt and debris. Lightweight to allow unrestricted, natural movement. Neoprene body and shock absorbing inner pad.  
#42071, Front F



#G West  
Travel Bag 22" x 10" x 12"

2N

**Classic Equine SensorFlex Cinches**

Soft & flexible w/a fleece backing & a padded nylon upper. Fleece is treated to resist bacteria growth. The contoured design follows the natural shape of the horse's heart girth. Recommended for use only w/leather latigos to allow the horse to expand naturally. Stainless steel hardware w/roller buckle for easier cinching.

Sizes: 26", 28", 30", 32", 34" or 36". Black.  
Straight - CR-1FU  
Roper - CR-1FU MSRG



2O

2O



BLACK NYLON

#436 - Slide Ear -  
(has 2 leather overlays and includes 3 conchos)  
#438 - Breastcollar 1" Felt Lined -  
(includes 4 conchos)

2P



Rust  
Black



Turquoise



Show Blanket



Grey

36 x 34"  
Mustang  
New Zealand Wool



Insignia

2R



Pop Art  
Pony



Sahara  
Leopard

THIRD PLACE  
3A



sample  
only

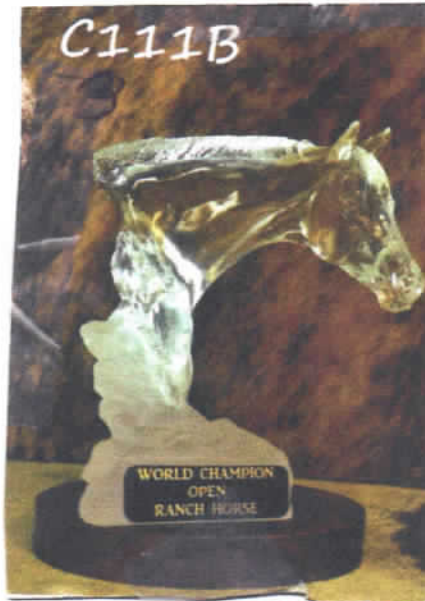
GSC THIRD PLACE "2024"  
Rider NAME + Pony NAME  
or Horse

3C



KEY FOB

3B



3F



Supreme Large  
Horsewear Bag II

29 1/2" H x 24 1/2" W x 9" D



3D  
CL30

3E



Hat Can

BLACK

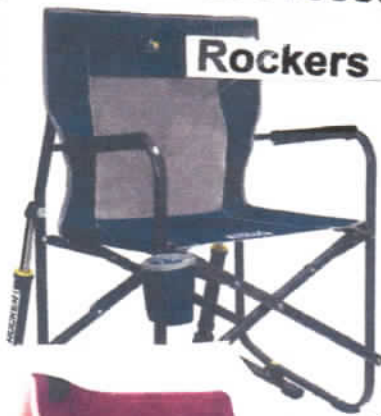


3G

Emilie Veillette  
Ladies Barrel  
Racing Bumper  
Spur  
Metalab

GCI Outdoor Freestyle

3H



Rockers



3I

35

Show Pro Plus - Wahl  
• Electromagnetic motor  
• Fetlocks, bridle path, face and ears  
• Easily adjusts to 30, 15 or 10 with thumb taper control  
• Complete with blade, blade guard, cleaning brush, oil, grooming DVD, & Wahl Equine Face Brush  
#39478



3L



A. EZ-View Storage Bag  
#41350

Lightweight outside and toasty inside with a front zipper and inside

- 100% nylon taffeta outer shell
- 75/13/12 polyester/rayon/cotton grey heather fleece lined body
- Hood with drawcord and sliders
- Set-in sleeves
- Reinforced slash front pockets with zippers
- Elastic cuffs and bottom band

Youth +  
Adults

Royal Blue

XL

Black Dark Maroon Navy Purple Red  
Green 5-m-l-2x-3x

3K +1

Mustang Faux Suede  
Contoured Saddle Pad

THIRD  
3M

**Deep, Wide Hay Bale Carrier!**

Showman hay bale/multi purpose carrier. Made of water resistant nylon materials. Measures approx 3 1/2 feet long, 14" deep and 18" wide. This carrier has 2 grommets for attaching calf or steer head. It features zipper closure and heavy nylon handles for support and has a large pocket on top with Velcro closure. Measures 3 1/2' X 14" X 18".



Bright Aluminum Barrel Stirrups



TEAL Royal Blue Purple Hot PINK Black



Trailer Grooming Bag

3Q



**Stable Sheet**

Durable, lightweight and breathable to prevent sweating in milder weather, but still offers layering capabilities for added warmth and comfort. Naturally contours to the horse's body.

Includes adjustable straps to keep sheet in place.  
XS (69"-71"), S (72"-75"), M (75"-77"), L (78"-80"), XL (81"-83").  
#47657, Closed Front  
#47658, Open Front



3D



#GP 422 Bronc Halter

3A

**Therapeutic**

**Bell Boot**

S, M, L, available

3R



VIOLGT TEAL BLACK Duratech Black Carbon

3S Troxel Terrain Riding Helmet



3T

Mustang MicroSuede Bareback Saddle Pad  
Mustang Manufacturing Corp

**HALTER/BRIDLE**



3V

#40230 Fleece Lined



E

F

**D.-F. Embroidered Horse Hoodie Jackets & Pullover**

Our best selling Sherpa Fleece jacket with embroidered horse returns in a great new color! Drawstring hood. Side-seam pockets, side slits and front zip. 26" long in size medium. Our Plush Sherpa Pullover is ultra-soft and embroidered with a galloping horse on the left chest. Quarter zip, stand collar and side slits. 28" long in size medium. 100% poly. Machine washable. Imported. Sizes: S-XL, 1X-3X.

3U

#SWest Weekender Bag 18" x8" x8"

3W



FOURTH PLACE



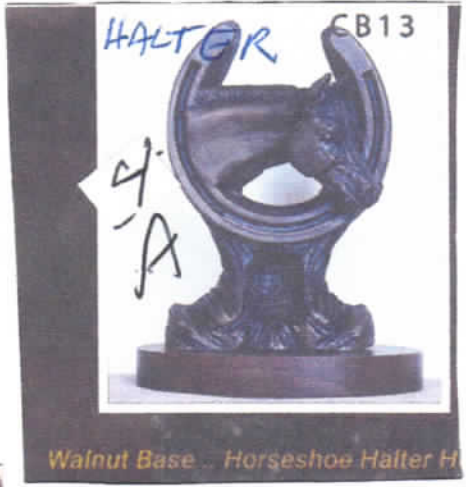
X Small - 5  
 Small - 6  
 Medium - 7-8  
 Large - 10  
 Extra Large - 14

**Cowgirl Hardware Ride**

**Horse Quilted Vest - Youth**



**Wash Tote Kit**  
 Comes with high absorbency sponge mitt, curved sweat scraper, rectangle sponge, jelly scrubber, mane & tail comb, and tote.  
 #43926



HALTER CB13

4-A

Walnut Base... Horseshoe Halter H



LCSP 2009  
 Kathryn Pesl

#4BKL  
 Buckle Plaque  
 w/crystals

4E



CB17

Pleasure

4B

Walnut Base... Sr. western pleasure



featuring intricate  
 Leather Tooling &  
 Decorative Conchos!



Mule  
 Tape Rope Halter  
 w/Tooled Nose  
 #45280  
 COMES WITH LEAD!

46

**Free Spirit 19 Inch Duffle Bag**



4I



Barrel CB18

4C

Walnut Base... Barrel Horse...

4H



**Bright Nylon  
 One Ear Headstall**

**Bright Nylon Breast Collar**



B. Scratchless Double  
 Bucket Holder  
 #43699

4J



Fourth 4K



**DIAMOND R DOUBLE WEAVE BLANKET**

These double weave acrylic blankets are handwoven in beautiful vibrant colors. Heavy feel. Great as a throw, seat cover, rug, or saddle blanket. Colors: Cream, Navy, Red or Turquoise. 32" x 64". RD-1HW \$34.99

4L



**Supreme Small Horsewear Bag II**

19 1/2" H x 11" W x 5 1/2" D

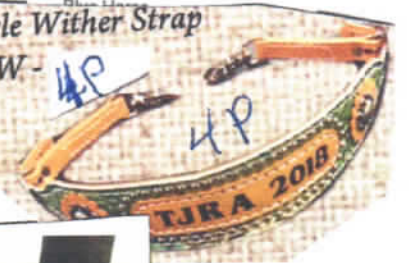


**Blue Horse Felt Contoured Saddle Pad**

4M

**Style Wither Strap**

#49W - 4P



#CS050

**Garment Bag (22X39X3) w/ two front pockets**

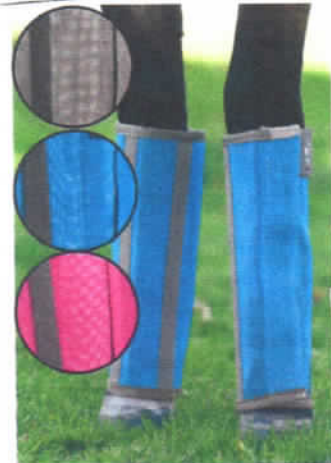


**Carry All Bag** - Double handles and a cushioned adjustable shoulder strap. Snaps on the handles. Two side pockets hold small items. Mesh front and bottom allows for air to circulate. 20"L x 20"H x 4"W. 20"L x 20"H x 4"W. #46668.



**WEATHERBETA Slow Feeder Hay Bag**

a strong & durable 1200 denier polyester hay bag that is waterproof & breathable. The opening closes securely with a touch tape flap. Featuring adjustable straps with clips to allow for easy hanging & a tight mesh weave bottom. Available in: grey navajo or navy. 28 1/4" x 16 1/2" w x 6". KO-1PX MSRP. 4R



**Professional's Choice Deluxe Fly Boots, 4 pack**

Colors: Charcoal, Pacific Blue or Pink

4Q

Mini
Pony
Small Horse/Cob
Horse
Large Horse

4S

**"SKATER COWGIRL"**



**"THE CATTLE DRIVE"**

SIZES: 69", 72", 75", 78", 81", 84", & 87"

**"ROSE GARDEN"**

**"PARTY CHEETAH"**

**FLEECE COOLER**

From providing an extra layer of winter warmth beneath a turnout, to increasing your horse's dry-time after a bath, fleece coolers are a versatile must-have in every barn. Jeffers' fleece coolers are designed with a standard neck, an adjustable chest and criss cross belly bands.

**Whisper Quiet**

**5 Way Adjustable Clippers**



4T

Rechargeable battery - comes with a charging cord that plugs into any USB port! Easy to charge in the truck, trailer, show grounds or at home. Easy Clean up, with blade brush included.

# FIFTH PLACE

## Portrait of Breeds Backpack

5A

**Hanging Bucket Holder**  
Durable 600D polyester fits a 5-gallon water bucket perfectly and allows you to hang water buckets without scratching your trailer. Bucket not included. #47836.



5B

16 1/2" x 12 1/2" x 6 1/2"

5C



Showman Sunflower & Rhinestone Bronc Halter Showman

5D



Showman Painted Cactus & 3D Flower Bronc Halter Showman

5E



Showman Painted Rose Bronc Halter Showman

B



Padded Helmet Bag B. #10719

5H



5AA

**Folding Saddle Ra**  
Lightweight stand const sturdy black metal tubir No assembly required.

5F



Cowgirl HARDWARE

**Rhinestones and Flare!**

Stunning quilted vest with rhinestones and embroidery, the perfect blend of style and functionality! This vest is made from high-quality materials that are both lightweight and durable. The quilted fabric provides excellent protection from the wind and rain, while the rhinestones add a touch of glamour!

- X Small - 5
- Small - 6
- Medium - 7-8
- Large - 10
- Extra Large - 14

The full-zip front allows for easy on and off.

5G



Large Horsewear Bag II

22" H x 30" W x 12" D

CSI Large Cooler w/ Leather Plaque Royal, Red, Black



Colors: Red (FEATURED), Black, White, Grey or Blue.



5J



**EXPRESSION PROTECTIVE BOOTS** The Jeffers Expression Protective Boots for Horses come in pairs & can be used on the front & hind legs. Protecting your horse's legs has never looked so good. These horse boots are made with a contoured fit that will hug your horse's legs. They are also made with smart noises in the inner protective neoprene to help promote air flow. Made with 3 Velcro straps & a velcro sling that will keep these horse boots in place your whole ride long. **Sizes:** Small 13.2 to 14.2 hands, Medium 14.3 to 16 hands or Large 16 to 17.2 hands.

**Patterned Protective Boots** - Skater Cowgirl (FEATURED), Rose Garden or Party Cheetah.

**Neon Protective Boots** - Turquoise/Purple (FEATURED), Lime/Turquoise, Pink/Lime, or Purple/Pink.

JEF-CDZ

JEF-2L1

*Fifth Place*



**Weaver Ultra Weave Show Blanket.** 34" x 36".

*SK*



Hand-woven from grade A

premium acrylic yarn, this blanket offers substance and reliable performance. Hand wash in cold water and hang or lay flat to dry.



*5M*

*Select ONE*

**Comfy Mesh Fly Sheet** - Fleece wither. Two buckle front closure. Hook-and-loop overlay secure. Nylon-lined shoulder. Low cross surcingle and removable elastic leg straps. 69"-84".



**Groom Tote**  
Multiple dividers inside. Rigid top adds to sturdy structure and has an adjustable closure strap with buckle. Mesh bottom lets dirt and debris sift through. Side mesh pocket perfect for a water bottle and side poly pocket with flap and hook-and-loop closure. Easy to clean. Black, cranberry, neptune, olive, posey, or sandia. 12" x 12" x 6.5". #45460.

*5L*

**B.-C. Horse Themed Nightlights**

Majestically detailed polyresin horses will guide the way through the dark. Swivel plug bases plug into standard outlets. **Horse** has an on/off switch and includes 7-watt bulb. **Horseshoe** has an automatic on/off sensor plus switch and includes 25-watt bulb.



*B*  
*5N*



**Gildan - Heavy Blend™ Full-Zip Hooded Sweatshirt.**

- Item #: 22460 Catalog Page #: 464
- 8 oz., 50/50 preshrunk cotton/polyester
- Air jet yarn - softer feel and reduced pilling
- Unlined hood with color-matched drawcord
- Metal zipper
- Overlapped fabric across zipper allows full front printing
- Pouch pockets
- Double needle stitching at shoulder, armhole, neck, waistband and cuffs
- 1 x 1 rib with spandex

*MEN*  
*WOMEN*  
*Youth*



*50*

White	Black	Ash	Cardinal Red	Cerulean Blue	Dark Chocolate	Dark Heather	Forest Green	Graphite Heather	Jet Black	Light Pink	Maroon	Navy
Red	Royal	Safety Green	Safety Orange	Sport Grey	<i>X5</i>	S	M	L	XL	2XL	3XL	

**Western Hair Clips**



*5P*

**D. Bridled Horses & Floral-Embossed Hair Clip**

Two-sided designs dress up classic claw clips. Antiqued, silver-finish **Bridled Horses Clip** features Western mounts in raised relief. **Floral-Embossed Clip** of faux leather has a composite turquoise cabochon. Sturdy plastic clips are 3 1/2" long.



*50*  
#Aztec Rio  
Weekender Bag 18" x8" x8"

*OR*  
#Aztec Peyote  
Weekender Bag 18" x8" x8"



*5R*



*59*

**Shin Guards**  
(Classic Equine) Flexible, hard outer shell provides great protection for your knees & shins while also being lightweight & comfortable. Removable liner is soft, cool & comfortable.



**Braided Mule Tape Halter w/9 ft Lead**  
Braided mule tape halter with wide, flat noseband. Comes with matching 9 ft lead. QL-101

SIXTH

6B



#Quirt Braided Quirt w/ Lettering

MGR 2018

6D

F. Sculptural Horse Photo Frame  
Made of stone/polyresin with a hand-painted finish. Frame is 9" x 7" with real twine bow and faux-suede tassels. Holds a 4" x 6" photo. BA22016

#HBS - Hobble Strap w/spots

#HBL - Plain Hobbles -

#HBK - Hobble Straps w/ crystals -



Turquoise - BLACK  
TEAL - ROYAL BLUE  
RED - PURPLE  
NAVY - HOT PINK  
HUNTER GREEN

Crewneck Sweatshirt

Sizes: S - 5XL



Youth  
Women  
MEN

6E

White Green  
Black Purple  
ASH ORANGE  
RED MAROON  
NAVY PINK



Western Saddle Cover

Nylon Colored Curb Chain



6F

6J



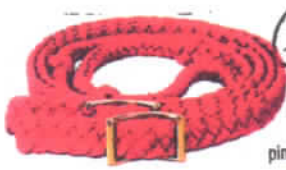
Country Pride Hanging Stall Organizer Bag

6H



Showman Leather Wither Strap With Crystals

6I



Knotted Braided Barrel Rein 8' flat braided nylon barrel rein with knots. Colors: red, turquoise, black, pink/black, lime green/black, navy/silver (featured), purple/black/turquoise or cream/tan



ComFITec Durable Mesh Fly Mask. Black/Purple Weatherbeeta

6K



Showman Nylon Halter in Patterns, Full, Aztec or Horse & Ride.

6L



Bell - Water repellent and stain resistant. 2520 denier DynoHyde material with a shock absorbing center, and soft jersey lining. Contoured fit and reinforced double hook-and-loop closures keep boots in place. M, L. #30243.

6O



Charmayne James C11 Bumper Spurs Reinsman

6N



Showman Premium Nylon Halter, Full, Cheetah or Tie Dye.

6M

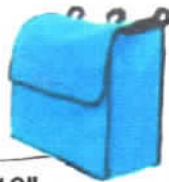
# SIXTH PLACE

6Q



#472F - Tooled Spur Straps -

6R



6P

## Adjustable Halter with

Horse  
SIZE



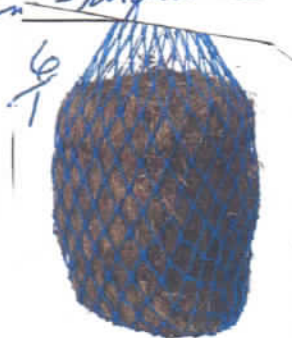
Sunflower Leather Overlay

## Protect And Store Your Blankets And Coolers And More!

TEAL - Red - NAVY - BLACK Measures: 23" x 23" x 10".

This heavy storage bag has three loops with clip closure to securely attach bag to stall front, trailer, or tack room. Large opening

Royal Blue - Purple - Hunter Green - Turquoise



Slow Feed Hay Net  
Colors: Blue/Royal (Featured), Red, Hunter Green, purple or Black.

## Showman Pony Angel Unicorn Print Wither Strap



6S

NEW!

## EXPRESSION BELL BOOTS

The Jeffers Expression Bell Boots provide protection for your horse's hoof, heel, & coronary band. Ballistic boots help absorb the shock from overreaching & protect your horse's hooves. The Jeffers Expression Ballistic Bell Boots are a necessity for keeping your horse's hooves protected while in turnout or riding. Made from a durable ballistic Nylon material to withstand regular use & with double Velcro to keep the boots securely in place with no turning. Sizes: Medium 14.2 to 15.2 hands or Large 15.3 hands+.

Expression Patterned Bell Boots (FEATURED) - Skater Cowgirl (FEATURED), Rose Garden or Party Cheetah

6U



Turquoise/Purple (FEATURED), Lime/Turquoise, Pink/Lime, or Purple/Pink.

## NEON BELL BOOTS



Showman Nylon One Ear Headstall in Patterns  
Patterns: Cheetah, Serape & Sunflower, Sunflower or Tie Dye.

SST-KT

**Comfort-Fit™ Lycra Fly Masks** Designed with your horse's comfort in mind! Smooth, stretchy lycra with binding around the edges fits your horse's face like a glove. Mesh around the eyes & ears allows for clear vision & keeps flies & bugs away. Available in: **A.** Cheetah Print, **B.** Bison Print, **C.** Flower Print, **D.** Sunflower, **E.** Santiago Stripes, **F.** Poker or **G.** Solid Charcoal. Sizes: Cob or Full.



6T



6W

## WEATHERBEETA 1200 Denier Hay Bags

Available in: umbrella, diamond navajo, gray navajo, seahorse, western tool, squirrel, santa fe sands, desert sky ombre, lagoon mist ombre, midnight aurora ombre, ocean breeze ombre or navy. 28 3/4" x 16 1/2" x 16 1/2"

## Forever Nylon Bucket Straps



Patterns: trekking west, cactus, floral, mayan coral or plaid aztec.

Bucket w/ Vinyl Decal  
#471LV LG  
#471SV SM

6Y



**DuraTote Tote Box** (Millers) Extra-thick side walls & compartments. Colors: red (Featured), blue, black, hot pink, lime green or purple. M3-DA



6Z



\*\*\*All Colors Available\*\*\*